

## JOB DESCRIPTION

<b>Job Title:</b>	<b>Public Health Practitioner – Adults and Social Prescribing</b>		
<b>Directorate:</b>	<b>Place</b>	<b>Salary:</b>	<b>£45,441 - £50,512 plus £689 LWA</b>
<b>Section:</b>	<b>Public Health</b>	<b>Grade:</b>	<b>BG-E SCP 37 - 42</b>
<b>Location:</b>	<b>Time Square</b>	<b>Work Style:</b>	<b>Flexible</b>

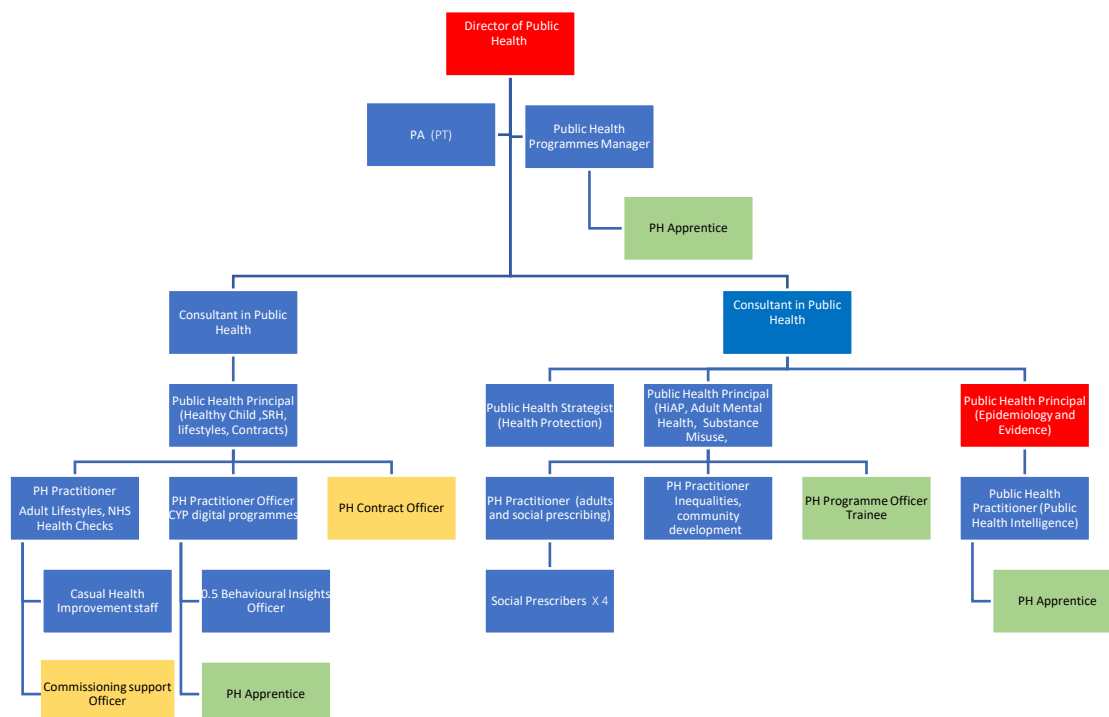
### Key Objectives of the role

Bracknell Forest Unitary Authority is appointing an experienced and dynamic Public Health Practitioner to join our team and who will have a range of complementary experience and skills. The person will be responsible for leading on the design, development and evaluation of a range of key Public Health work streams, focusing on adults and communities. The role includes management of staff, budget management and reporting to senior officers and committees.

The Public Health Practitioner will also oversee the operational management of the well established in-house Social Prescribing Service, and lead on the strategic development of the service and workforce to ensure it serves local need, is embedded within communities and contributes to reducing health inequalities across our population.

The role will require effective strategic approaches to enable our residents to stay well, build resilience, reduce social isolation and loneliness across the life course and in collaboration with key local partners.

### Designation of post and position within departmental structure



---

## Daily and monthly responsibilities

- To lead on the design, development and evaluation of a range of key Public Health work streams, in agreement with the Consultant in Public Health and Public Health Principal. The portfolio will be very closely aligned with Bracknell Forest's current Health and Wellbeing Strategy, with a focus on the priorities 2 (*Creating Opportunities for individual and community connections, enabling a sense of belonging and the awareness that someone cares*) and 5 (*Improve years lived with good health and happiness*).
- To oversee the operational delivery and strategic direction of the in-house Social Prescribing service to ensure it achieves demonstrable outcomes for the population and reaches key target resident groups locally.
- To develop effective relationships with key stakeholders to drive the social prescribing offer to address social isolation and build capacity within the community, working closely with other services that support physical and mental health and wellbeing.
- To work collaboratively with key partners to ensure the public health programmes and Social Prescribing service are embedded into the wider health and social care system, as well as the existing community offer.
- Oversee the performance and monitoring of Social Prescribing and service and relevant public health programmes. This includes developing key performance indicators and reporting mechanisms.
- Build and maintain strengths and capacities of voluntary, community and social enterprise groups to receive referrals and refer to the Social Prescribing and develop systems for evaluating effectiveness of referrals.
- Contribute to the management of Public Health budgets aligned to Ring Fenced Public Health Budget and staff related to key Public Health work streams.
- Identification of health needs, using appropriate analytic techniques and working with multiple qualitative and quantitative data sources, including intelligence from local communities
- Supporting the development and delivery of Joint Strategic Needs Assessment and evidence-based strategies to meet these health needs
- Evaluating the impact of programmes and projects using appropriate evaluation techniques.
- To provide expert interpretational advice to local council colleagues (public health and non-public health) on the development and use of the public health outcomes framework.
- To develop and manage the systems relationship between the public health function of the local council, Integrated Care System and Primary Care Network.
- Maintain strategic links between the Social prescribing and Adult Social Care service and develop pathways to stimulate, manage demand and capacity, and ensure referrals are appropriate and timely.
- Work closely with the council teams, Integrated Care Systems and Primary Care Networks to influence system and pathway development.
- Use local intelligence on the needs of different communities to inform the public health programmes. This includes using appropriate analytic techniques and working with multiple qualitative and quantitative data sources, including intelligence from local communities.

## Professional Responsibilities

- Uphold the requirements of the UKPHR Registration, meeting the standards through public health practice.
- Receive professional management and support from a Public Health Principal or relevant public health professional.
- Ensuring commitment to the principles and practice of valuing diversity and equal opportunities.
- Undertake professional development activities, including in-house training, attendance and presentation at conferences and workshops and other agreed activities such as work towards registration as a public health practitioner
- Work independently across the health and local council system to influence change and lead innovation.

- 
- Communicating data and information, both orally and on paper, in a manner that assist large, often diverse audiences to understand its importance.
  - Contributing to the training and supervision of other Public Health Practitioners and Trainees and Public Health Apprentices.
  - Managing public health projects, ensuring they are completed to time and budget, using project management methodologies.
  - Supporting and responding to bids for funds regarding agreed projects as necessary. This may include the drafting of proposals and demonstrating the analytical processes to be followed.

### **Managerial Responsibilities**

- Line manage a team of social prescribers to ensure the effective delivery of the service and professional capacity of the workforce to meet population needs.
- Provide support to the Public Health Principal to ensure that effective systems for programme management are in place to support the delivery of programmes and ensure programme and project objectives are met.
- Provide support to the Public Health Principal to develop and monitor appropriate performance indicators and outcome measures as agreed in the Directorate Business Plan.
- The postholder will ensure that where they are collecting, calculating, recording, analysing or reporting data, it is accurate, reliable and consistent to ensure that decision-making processes are based on the highest quality data in accordance with the Council's Data Quality Statement. The postholder will also ensure that sensitive and personal data is handled in accordance with data protection legislation and Council GDPR policy.
- Such other duties as may from time to time be necessary, compatible with the nature of the post. It should be noted that the above list of main duties and responsibilities is not necessarily a complete statement of the final duties of the post. It is intended to give an overall view of the position and should be taken as guidance only.

### **Scope of role**

- The role will include some budget responsibility linked with Social Prescribing service and ringfenced budgets linked to public health projects and programmes.
- Commitment to the Council's Equal Opportunities policy at all times
- Commitment to working within the bounds of the Data Protection Act and GDPR legislation at all times
- Such other duties as may from time to time be necessary, compatible with the nature of the post. It should be noted that the above list of main duties and responsibilities is not necessarily a complete statement of the final duties of the post. It is intended to give an overall view of the position and should be taken as guidance only

## PERSON SPECIFICATION

KEY CRITERIA	ESSENTIAL	DESIRABLE
<b>Skills and qualifications</b>	<p>Degree or equivalent relevant experience in public health or a health-related field.</p> <p>UKPHR Registration or working towards UKPHR Registration.</p>	<p>Masters degree or other evidence of advanced knowledge relating to health, public health or a related field.</p> <p>Management qualification or demonstrable equivalent knowledge.</p> <p>Project or Programme Management qualification.</p>
<b>Competence Summary</b> (Knowledge, abilities, skills, experience)	<p>Community Development knowledge including experience and application of community development and engagement theories</p> <p>Substantial Public Health programme management experience</p> <p>Knowledge and understanding of issues affecting older or socially isolated people</p> <p>In depth knowledge and understanding of social prescribing</p> <p>Working knowledge of current social, political and economic issues relating to the public health knowledge of JSNAs and other key public health data sources and tools</p> <p>Advanced knowledge of Health Improvement systems and services including lifestyle change</p> <p>Experience of leading system-wide change in relation to Public Health</p> <p>Experience of managing staff and budgets</p> <p>Experience of analysing data and handling datasets</p> <p>Experience of writing reports for different audiences Experience of prioritising work, managing time and working under pressure to deliver deadlines</p>	<p>Experience in driving service improvement and effectiveness</p> <p>Familiarity or experience with Clinical Systems and programme evaluation</p>

---

Experience of needs assessment

Experience of working in a political environment

Experience of implementing policy into local action

Experience of developing relationships across local communities

Experience of working effectively with multiple organisations

Experience of working in project teams

Excellent numeracy skills

The ability to write clearly and communicate complex data to different audiences

Presentation skills

Excellent IT skills

Understanding and commitment to the principles and practice of valuing diversity and equal opportunities

Understanding of and commitment to the requirements of safeguarding children, young people, vulnerable adults and promoting their welfare.

---

**Work-related Personal Requirements**

The post holder must hold a full UK driving licence (or valid equivalent).  
Non-UK licences must be converted to UK licences in the first six months of employment.

---

**Other Work Requirements**

A satisfactory enhanced Disclosure and Barring Service check.  
  
This post is exempt from the Rehabilitation of Offenders Act 1974.

---

**Role models and demonstrates the Council's values and**

Our values define who we are. They outline what is important to us. They influence the way we work with each other – and the way we serve our residents and engage with our communities.

---

---

**behaviours**

We make our values real by demonstrating them in how we behave every day. Our values are Inclusive, Ambitious, Always Learning.

---

**All staff should hold a duty and commitment to observing the Council's Equality & Dignity at Work policy at all times. Duties must be carried out in accordance with relevant Equality & Diversity legislation and Council policies/procedures.**

